



Mini-Clinical Outreach Team (Mini-COT)



Bringing Services Closer to Communities

Foundation for Reproductive Health Services India (FRHS India) is an affiliate of MSI Reproductive Choices. We work towards delivering family planning information and services to women, closer to where they live through Mini-Clinical Outreach Teams (Mini-COTs).

Mini-COT is a mobile three-member team that offers spacing methods of family planning, especially to young adults. The health sub-centres in hard-to-reach areas often cannot provide services due to constraints such as a lack of trained personnel and inadequate equipment. Thus, our Mini-COTs travel to these sub-centres on fixed days to ensure quality services.

Services Offered

A Mini-COT offers a basket of reproductive health and family planning services which include:



Intrauterine
Contraceptive
Device



Family Planning Counselling
(including postpartum family
planning counselling)



Oral
Contraceptive
Pills



Referrals for clients
who need permanent
methods



Condoms



Emergency
Contraceptive
Pills

Clients Served



25,120

Couple Years
of Protection
(CYPs)
generated

7,599

Intrauterine
Contraceptive
Device (IUCD)
services
provided

How Do Mini-COTs Work?

Mini-COT is equipped to offer spacing methods of family planning. On pre-determined days, Mini-COTs travel from the headquarters to the identified sub-centres and provide services identified in consultation with the district authorities. Community health workers let the local people know about the visit in advance.



Quality of Care

Client Comfort, Safety & Satisfaction



Clinical
Governance



Technical
Competence



Adherence to
Professional
Standards

Services provided by competent providers as per Government of India (GoI) and MSI Reproductive Choices clinical standards.

Annual Quality Technical Assessment carried out by MSI Reproductive Choices.

Regular refresher trainings and supportive supervision provided on critical areas, such as Infection Prevention, Medical Emergency Management and Counselling.

Client follow-ups via telephone done within 24-36 hours of providing service, and Annual Client Exit Surveys carried out to assess client satisfaction levels.

Annual Competency Assessment of all team members.

National and state medical advisory teams review quality standards, organise trainings and monitor Incident Management.

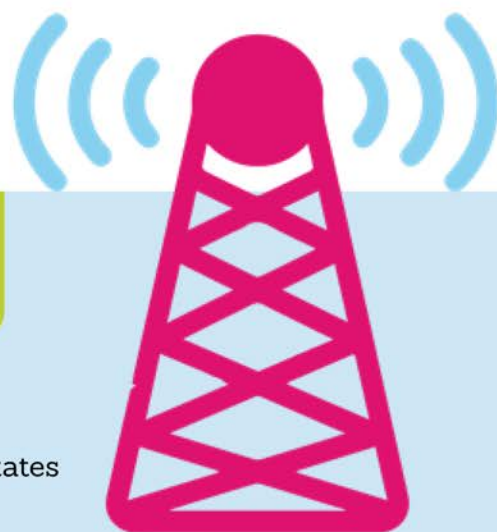




Coverage and Reach

5 Teams providing services

3 States



Support Us

Our work enables women and men to choose when and how many children they want and to improve the quality of life for themselves and their families. Join us in creating a world where every child is wanted, and every woman is healthy.

Donate Now: <https://www.frhsi.org.in/donate/donate.php>

Our dedicated call centre is available Monday to Saturday, from 9.30 a.m. to 6 p.m.

For personalised support, counselling, and access to comprehensive sexual and reproductive health services, call us: **7590870908 (toll-free)**

For more details, please contact: info@frhsi.org.in

Headquarter

 B-37, Gulmohar Park,
New Delhi - 110049

 +91 11 49840000

 www.frhsi.org.in

Follow us on:

 @Foundation for Reproductive Health Services India

 @FoundationforReproHealthServicesIndia

